

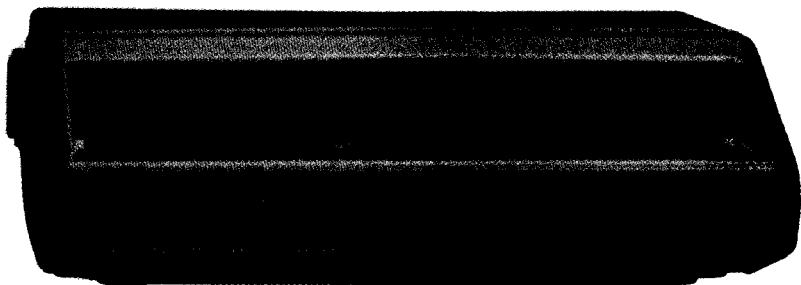
MAINTENANCE MANUAL

S-600 SERIES CONTROL UNIT

Single Frequency Control Unit 19D900272G3

1-8 Frequency Control Unit 19D900272G4

MAY 19 RECD -1987



SPECIFICATIONS *

USED WITH CONTROLS

OFF-VOLUME
SQUELCH OR SQUELCH Monitor
FREQUENCY Selector (19D900272G4 only)
Option Switches

INDICATORS

Red Transmit Light
Green Call Light (Optional)
Yellow Channel Busy Light (Optional)
Frequency Indicator (19D900272G4 only)

*These specifications are intended primarily for the use of the serviceman. Refer to the appropriate Specification Sheet for the complete specifications.

TABLE OF CONTENTS

SPECIFICATIONS	Cover
COMBINATION NOMENCLATURE	iii
DESCRIPTION	1
CIRCUIT ANALYSIS	1
Multi-Frequency Switch (S6)	1
Mode A/B Select Switch	1
Squelch	1
Channel Busy	2
Call Light	2
12 Volt Ignition Switch Connections	2
MAINTENANCE	2
Disassembly	2
Indicator Replacement	3
Re-Installation	3
OUTLINE DIAGRAMS	4
SCHEMATIC DIAGRAMS	5
MECHANICAL BREAKDOWN	6
OPTION APPLICATION	7 - 8
POWER/CONTROL CABLES	9
PARTS LIST	
Control Unit Board 19D900272G3 & G4	10
Speaker 19C850550G1 & G2	10
Associated Assemblies	11
Power Control Cables 19D900436G1-G12	11
Ignition Switch Cable 19A702041G1 & G2	12
Microphone 19D900141G3	12
Antenna 19B209568P1	12

ILLUSTRATIONS

Figure 1 - Control Unit Layout	1
Figure 2 - Using Extraction Tool	3
Figure 3 - 12 Volt, Negative Ground Connections	3

WARNING

Although the highest DC voltage in the Control Unit is supplied by the vehicle battery, high currents may be drawn under short circuit conditions. These currents can possibly heat objects such as tools, rings, watchbands, etc., enough to cause burns. Be careful when working near energized circuits!

High-level RF energy in the Transmitter Power Amplifier assembly can cause RF burns upon contact. Keep away from these circuits when the transmitter is energized!

COMBINATION NOMENCLATURE

DIGITS 1 & 2	DIGITS 3 & 4	DIGIT 5	DIGIT 6	DIGIT 7	DIGIT 8
Product Code	Number of Frequencies	Mounting	Frequency Capacity	Control Unit Application	Configuration
C4	01 1-Frequency	O Standard	A 1-Frequency	B Delta-S	O STANDARD
	08 8 Frequencies		K 1-8 Frequencies		

STRUCTURED OPTIONS

DIGIT B	DIGIT D	DIGIT E	DIGIT H	DIGIT M	DIGIT P	DIGIT R	DIGIT S	DIGIT T	DIGIT Y
Universal Tone Cable	Public Address	Carrier Activity Light	Hangup/ Hookswitch	Microphone	Squelch	Accessories	Speaker	Ignition Cable	Mode A/B
O None	O None	O None	O Hang-up Bracket	O Standard	O Fixed (Standard)	O Standard	O Delta Standard	O W/o Ign Standby	O None
A Univ. Dec Cable	F Public Address	A Carrier Activity Light	I Hookswitch	1 MASTR II	V Variable	1 3 mtr cable short ground	1 3 x 5 Window	1 With Ign Standby	1 A/B
B Univ. Enc. Cable			2 Handset Holder	2 Mastr II Noise Canc.		2 9 mtr cable short ground	2 Mastr II	2 No Cable	
			3 Handset Holder	3 Handset		3 6 mtr cable long ground	3 Mastr II Window		
			4 No Hksw or Brkt	4 None		4 3 mtr cable long ground	5 Ext. Spkr. 8 ohm		
			5 Hksw (Dec. Appl)			5 9 mtr cable long ground	6 No Speaker		
			6 Hndst Hksw (Dec. Appl)			N No Accessories	A Int/Ext Spkr & SW		
						C No Cables			

DESCRIPTION

The control units are attractively styled, highly functional units that are enclosed in a two-piece molded housing for durability and ease of disassembly. The control unit uses a printed wiring board to provide a minimum of wiring. The only internal wires used are jumpers for the various options. The control unit is mounted to the vehicle with a safety release mounting bracket assembly for passenger safety.

Cable plugs are secured to the back of the control unit by plastic locking clips. The plugs are equipped with indexing tabs to assure connection to the correct jack.

The microphone plug is secured to a jack at the back of the unit by means of a captive locking screw.

All indicator lights are light-emitting diodes (LEDs) for reliability, long life, and low power consumption. A small incandescent lamp is used as a power ON indicator, and to backlight the function labeling.

CIRCUIT ANALYSIS

The Control Units are equipped with an OFF-VOLUME control and a SQUELCH control. The multi-frequency control unit is also equipped with a frequency selector switch and a seven segment frequency indicator. (See Figure 1).

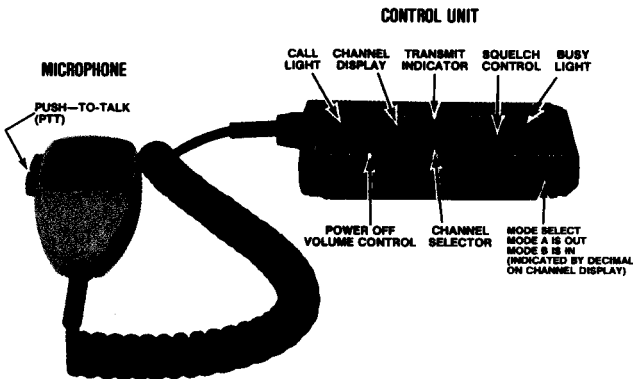


Figure 1 - Control Unit Layout

When switch S1 is turned OFF, power is removed from the radio except for the transmitter power amplifier (PA). The PA is connected to the vehicle battery at all times. Turning the switch ON applies power to the radio, provides power for the push-to-talk (PTT) circuit and lights the power-on indicator in the Frequency Indicator (if present), and controls audio volume level.

Releasing the PTT switch turns off the transmitter and transmit indicator, de-energizes the antenna switch and unmutes the receiver.

D1 and D2 are protective diodes. D1 will cause the fuse in the yellow lead to blow if the polarity is reversed. D2 prevents A+ from bypassing the ignition switch (even when it is turned off), and energizing other equipment in the vehicle.

MULTI-FREQUENCY SWITCH (S6)

Frequency selector switch S6 is an eight-position rotary switch with a binary output to control channel selection.

The frequency selector switch selects the desired channel for transmitting and receiving. Section 6A of the switch connects A- per binary code output to FB1,2,3 and 4 and thence to the EE PROM in the radio. The EE PROM and Microcomputer select the channel according to the binary code (see BCD output in Table 1).

Section 6B of the rotary switch controls the seven segment frequency display.

Table 1

POS	BCD OUTPUT				7 SEGMENT OUTPUT
	8'S	4'S	2'S	1'S	
F1	0	0	0	1	1
F2	0	0	1	0	2
F3	0	0	1	1	3
F4	0	1	0	0	4
F5	0	1	0	1	5
F6	0	1	1	0	6
F7	0	1	1	1	7
F8	1	0	0	0	8

1 = COMMON CONNECTED (CLOSED)
0 = OPEN TO COMMON

MODE A/B SELECT SWITCH (S2)

The Mode A/B option allows the S-600 Control Unit to expand from 8-frequency control to 16-frequency control. The pushbutton switch S2 is normally out for A Mode and Frequency Select switch S6 will select the first eight channel frequencies as programmed in the radio EEPROM. For B Mode, S2 is pushed in.

This applies A+ to the channel display through R8 to illuminate the decimal (.) signifying B Mode. At the same time, A-(low) is applied through frequency bit 5 (PB5) output to port 26 of Microcomputer U705 in the MASTRO DELTA-S radio. In this mode, a second set of eight channel frequencies may be selected as programmed in the radio second EEPROM.

NOTE

To utilize the A/B Mode, there must be two EEPROMS in the associated DELTA-S radio. The Mode A channels are controlled by EEPROM 1 and the Mode B channels are controlled by EEPROM 2.

SQUELCH

Squelch control may be used fixed (standard) or variable. Fixed squelch threshold is set in the radio. For variable squelch jumper W6 is cut and W7 is in (also see jumpers in radio). Variable resistor R5 sets variable squelch level. Set R5 fully clockwise and adjust noise level with Volume control R3. Turn R5 CCW until receiver is muted.

CHANNEL BUSY

The channel busy board mounts on J2, J3, J4 and J5 on the control unit board. When no on-frequency signal is being applied to the radio, the Carrier Activity Sensor (CAS) line is low (near ground potential). This forward biases diode D2 and keeps Q1 turned off. When an on-frequency signal is received, the CAS line goes high (near 9 volts). This reverse biases D2, allowing Q1 to turn on. When Q1 conducts, the yellow Channel Busy (BY) indicator H1 turns on and remains on until the channel is clear. Keying the transmitter (PPT low) also turns off Q1, turning off the Channel Busy indicator.

CALL LIGHT

A green Call (CL) is used in Type 99 or Type 90 tone options. This light turns on when a call has been received.

12 VOLT IGNITION SWITCH CONNECTIONS

In 12 Volt vehicle systems, the Control Unit may be connected for two different mode of operation, depending on the way the ignition switch cables are connected in the vehicle system. The black cable provides the system ground connection. The yellow fused lead provides the receiver hot connections and the transmitter Push-to-Talk hot connection. Two types of operation are:

1. **Ignition Switch Control** - For ignition switch control, the yellow fused lead connects to the ACCESSORY or ON terminal of the ignition switch. The transmitter and receiver will operate only when the ignition switch is in the ACCESSORY or ON position. Turning the ignition switch OFF removes all power to the Control Unit.
2. **Ignition Switch Bypass** - For ignition switch bypass, the yellow fused lead connects to the "hot" side of the ignition switch or the vehicle fuse block assembly. Both the transmitter and receiver operate independently of the ignition switch and are turned on and off only by the POWER-ON switch on the Control Unit.

MAINTENANCE

DISASSEMBLY

To gain access to the control unit printed wiring board, turn the control unit bottom side up and remove the four Phillips-head screws. Next, carefully lift off the bottom cover to expose the printed wiring board.

CAUTION

The control unit printed wiring board is mounted in the top section of the control unit, and is secured only by the bottom cover. Be careful not to drop the printed wiring board when disassembling the control unit.

INDICATOR REPLACEMENT

All indicators are mounted in sockets on the control unit printed wiring board. The LED indicators are easily unplugged and replaced. A hole in the back of the incandescent lamp socket can be used to push out the lamp.

RE-INSTALLATION

12-Volt Systems

The mobile combination can operate in ±12 Volt systems. If the radio is moved to a different vehicle, always check the battery polarity and voltage of the new system before using the radio.

If the radio is moved to a vehicle with different battery polarity, it will be necessary to change the ignition switch leads to the vehicle system plug. Use the extraction tool as shown in Figure 2, and change the leads as shown in Figures 2 or 3, as required.

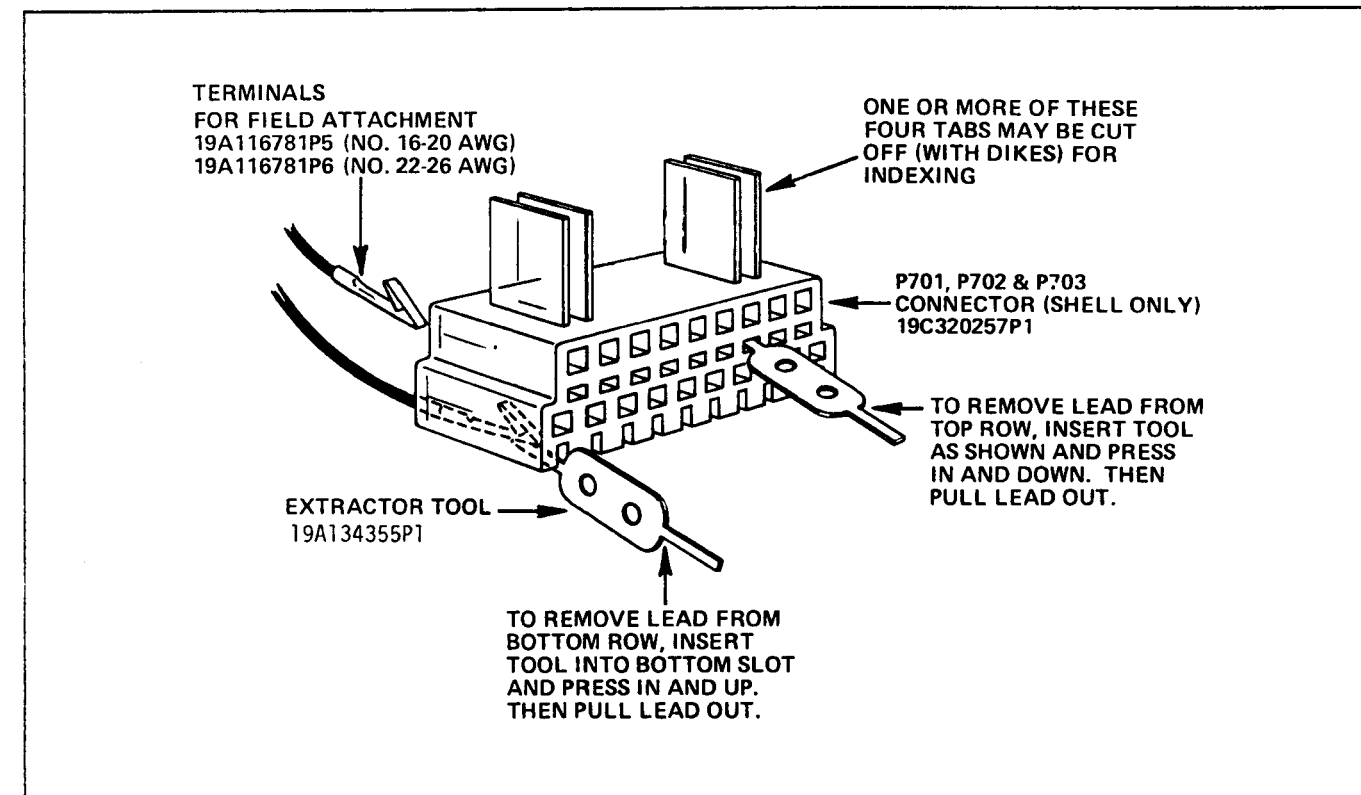


Figure 2 - Using Extraction Tool

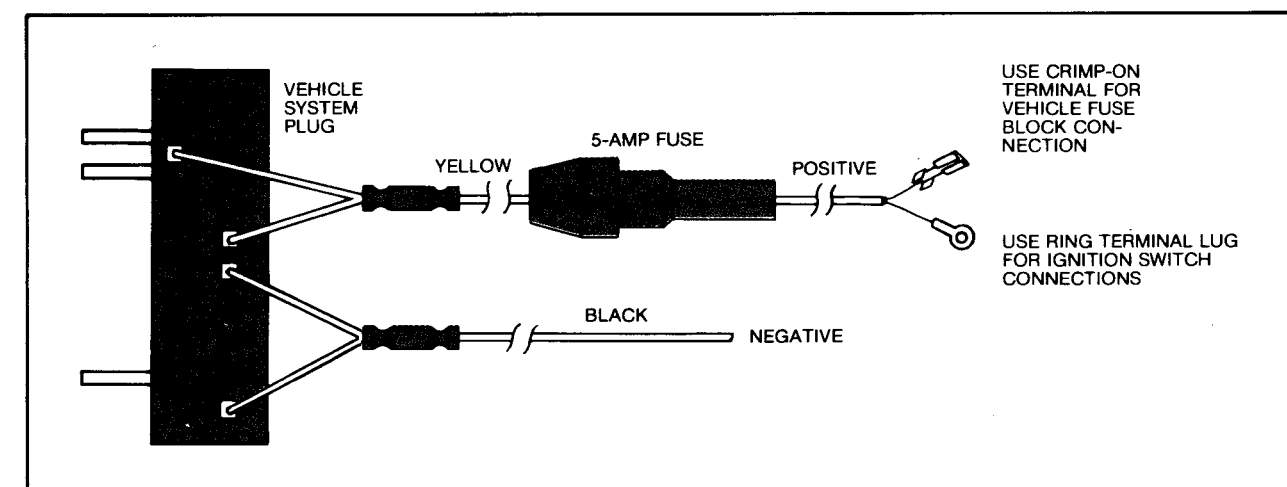
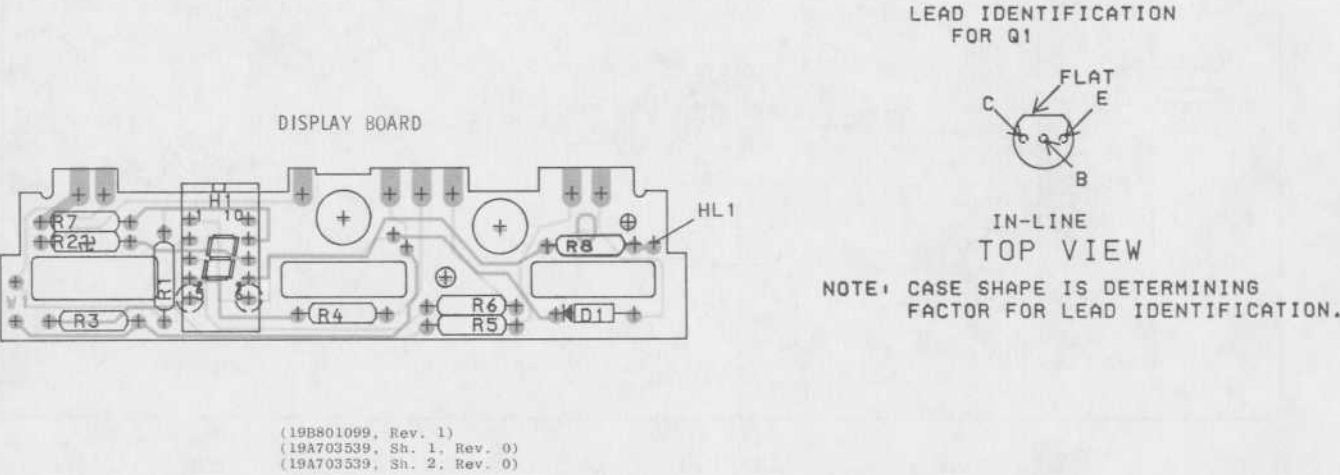
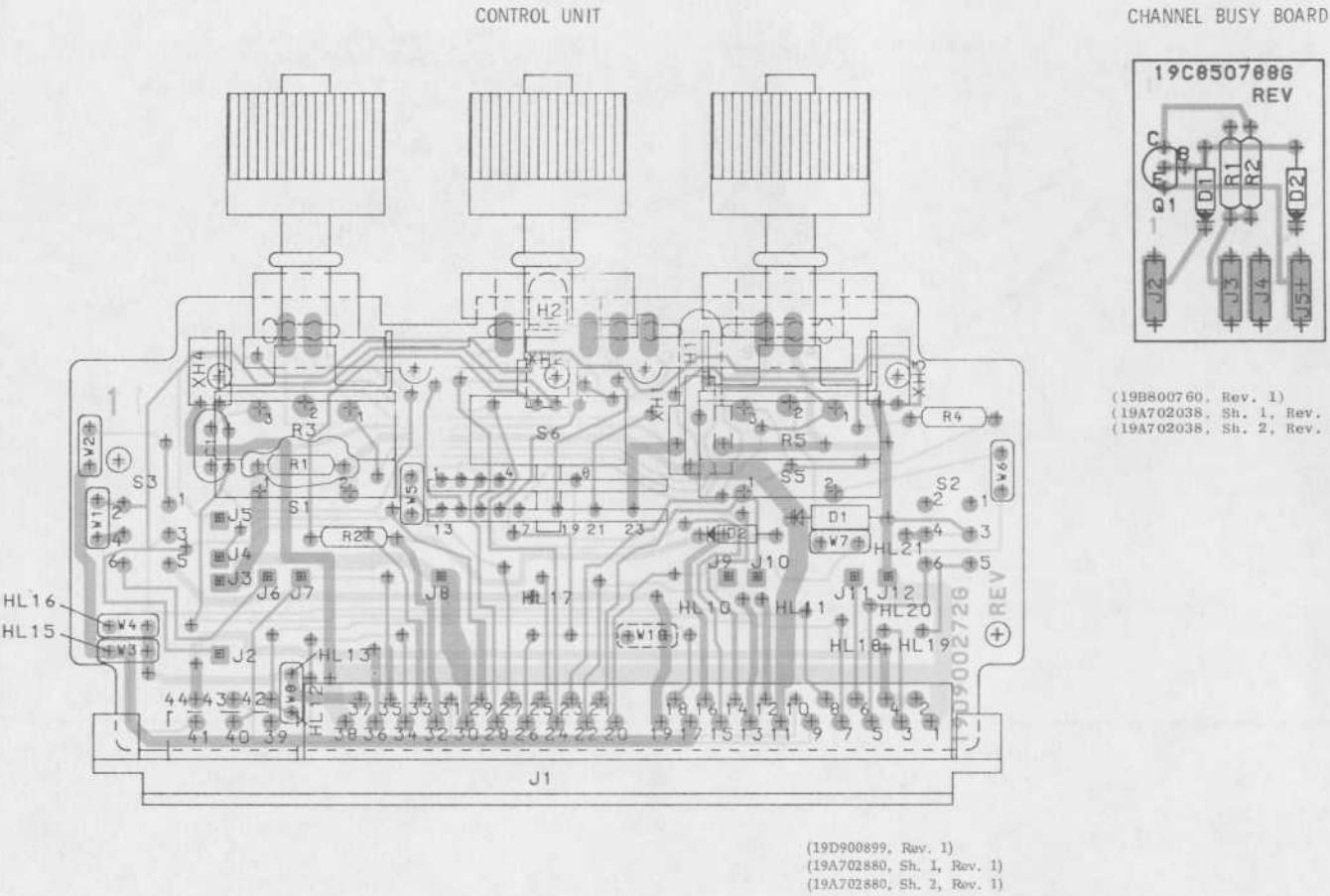


Figure 3 - 12-Volt, Positive Ground Connections

GENERAL ELECTRIC COMPANY • MOBILE COMMUNICATIONS DIVISION
WORLD HEADQUARTERS • LYNCHBURG, VIRGINIA 24502 U.S.A.

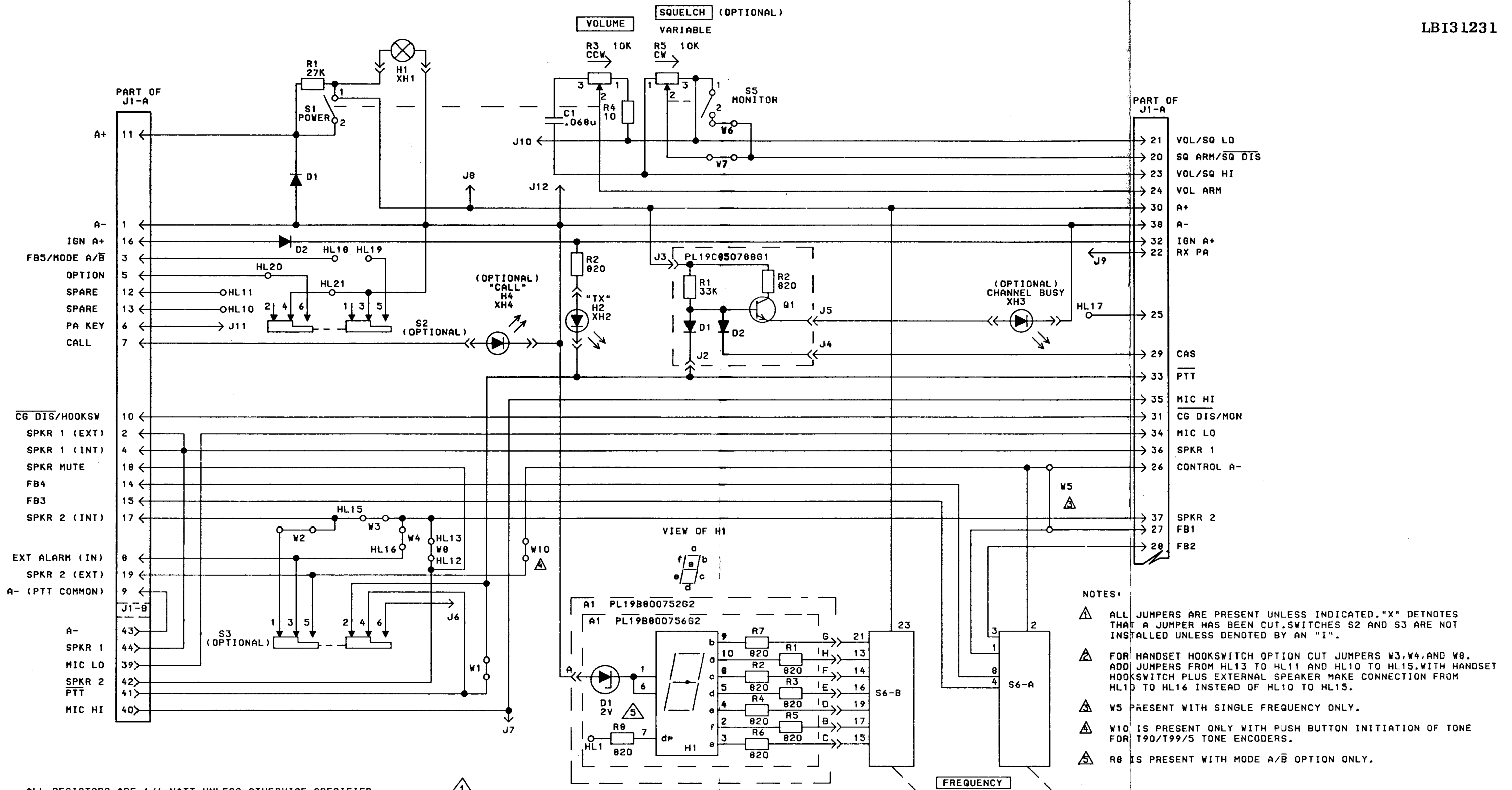
GENERAL ELECTRIC
U.S.A.

* Trademark of General Electric Company U.S.A.
Printed in U.S.A.



OUTLINE DIAGRAM

CONTROL UNIT



ALL RESISTORS ARE 1/4 WATT UNLESS OTHERWISE SPECIFIED. RESISTOR VALUES IN Ω UNLESS FOLLOWED BY MULTIPLIER k OR M. CAPACITOR VALUES IN F UNLESS FOLLOWED BY MULTIPLIER μ , n OR p. INDUCTANCE VALUES IN H UNLESS FOLLOWED BY MULTIPLIER m OR μ .

MODEL NO.	REV. LETTER
PL19B800756G2	
PL19C850788G1	
PL19D900272G3	
PL19D900272G4	

OPTION	W1	W2	W3	W4	W5	W6	W7	W8	S2	S3
STANDARD (FIXED SQUELCH)							X			
VARIABLE SQUELCH						X				
EXTERNAL SPEAKER			X							I
PUBLIC ADDRESS	X		X							I
TYPE 90/99 DECODER WITH EXTERNAL RELAY		X		X						I
T90/T99/5 TONE ENCODERS									I	
HOOKEWITCH INITIATION (2 TONE)									I	
T90/T99/5 TONE ENCODERS									I	
PUSHBUTTON INITIATION (1 TONE)									I	
T90/T99/5 TONE ENCODERS									I	I
PUSHBUTTON INITIATION (2 TONE)									I	I

S6 TRUTH TABLE

POS	8	4	3	1	7	SEGMENT OUTPUT
F1				X		1
F2			X			2
F3			X	X		3
F4		X				4
F5		X		X		5
F6		X	X			6
F7		X	X	X		7
F8	X					8

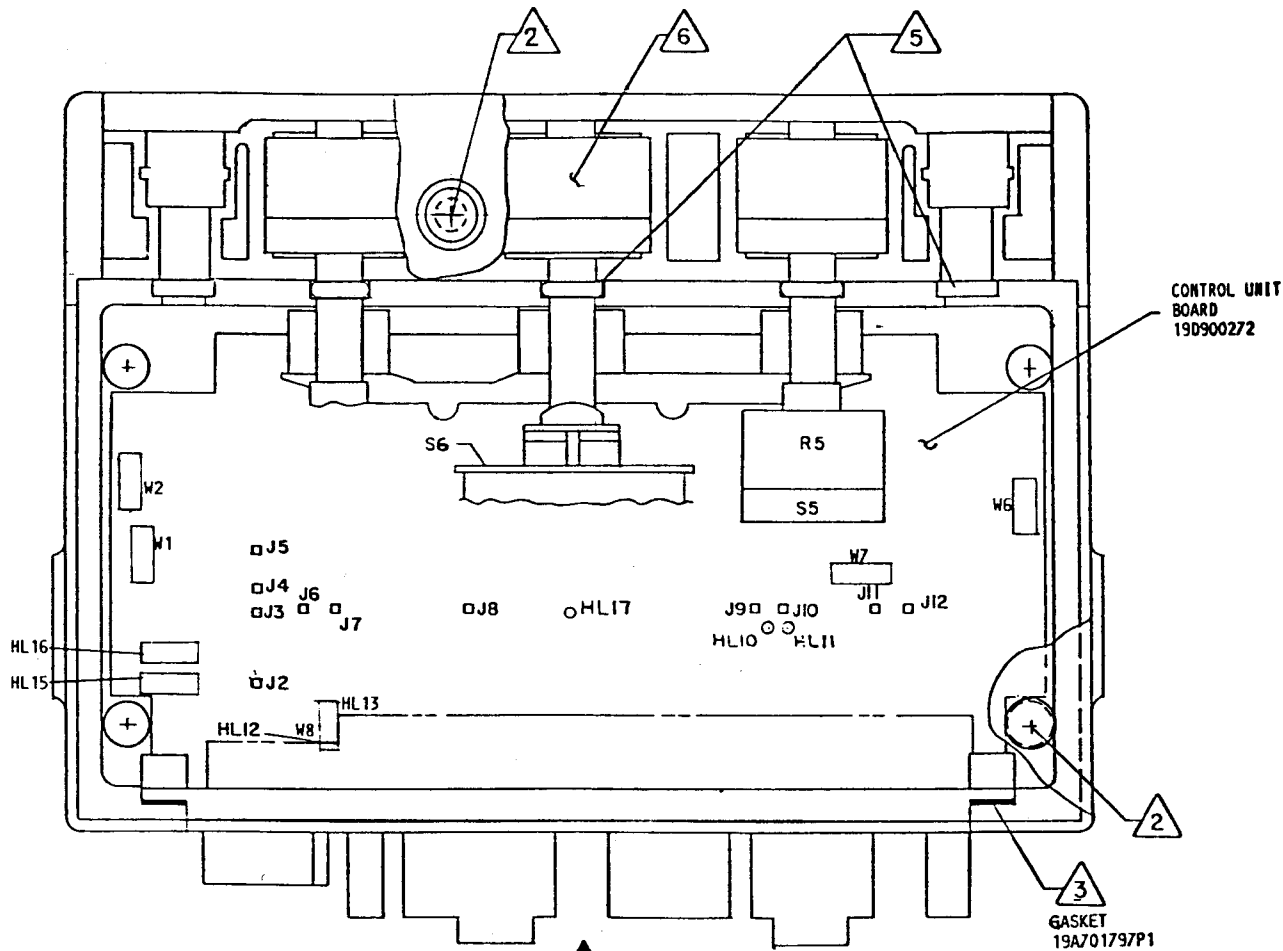
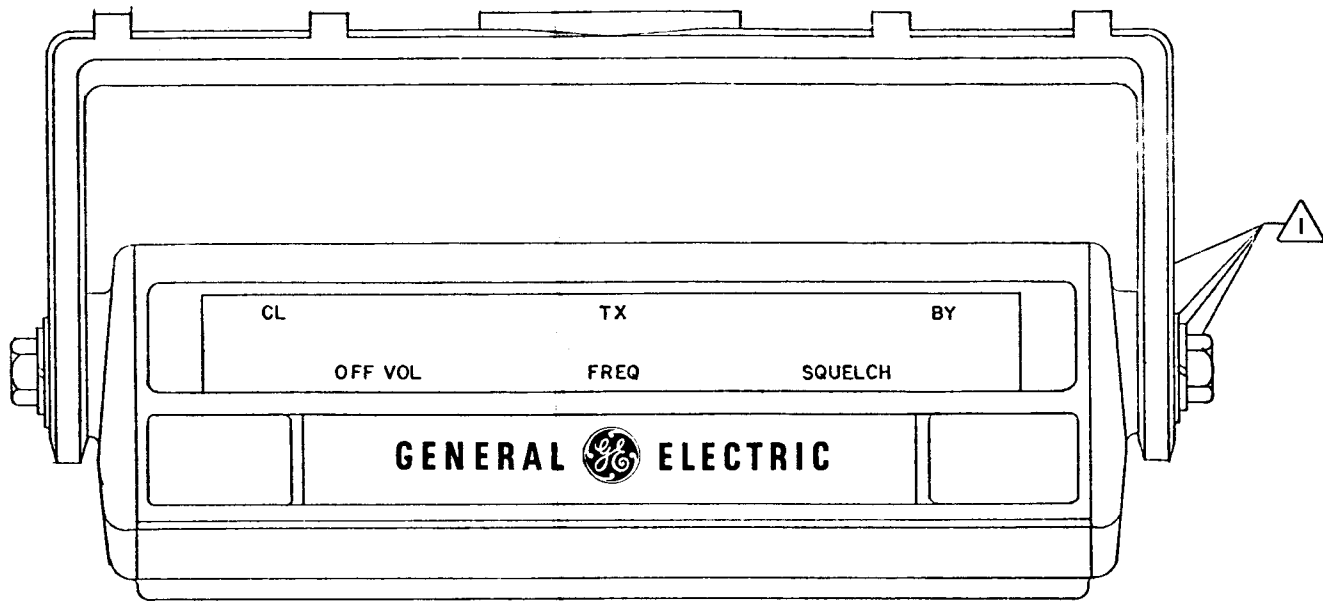
X - CLOSURE TO COMMON (2)

(19D900911, Rev. 2)

SCHEMATIC DIAGRAM

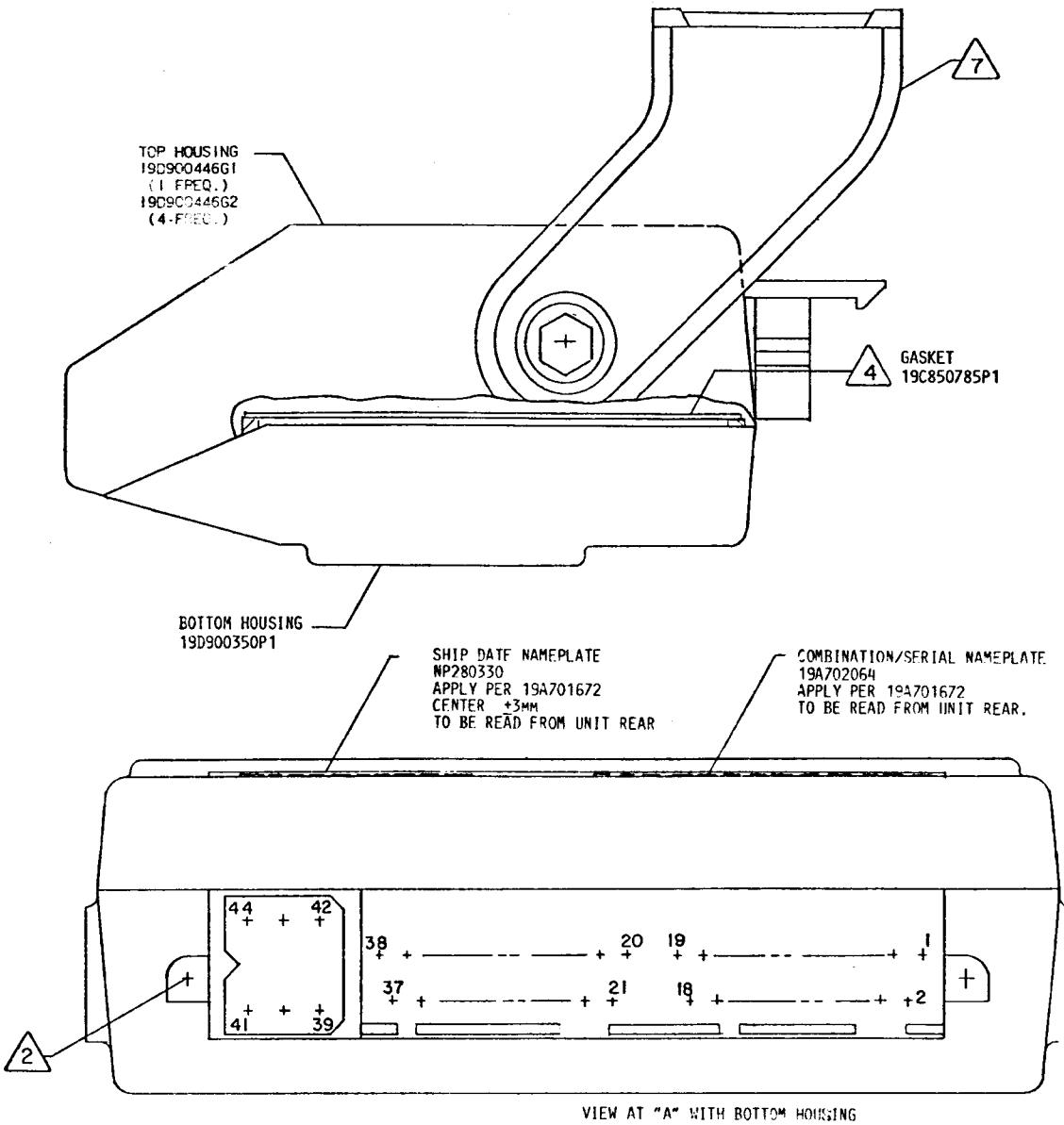
SINGLE & 1-8 FREQUENCY CONTROL UNIT

Issue 1



MECHANICAL BREAKDOWN

VIEW "A"
VIEW FROM BOTTOM WITH BOTTOM HOUSING REMOVED

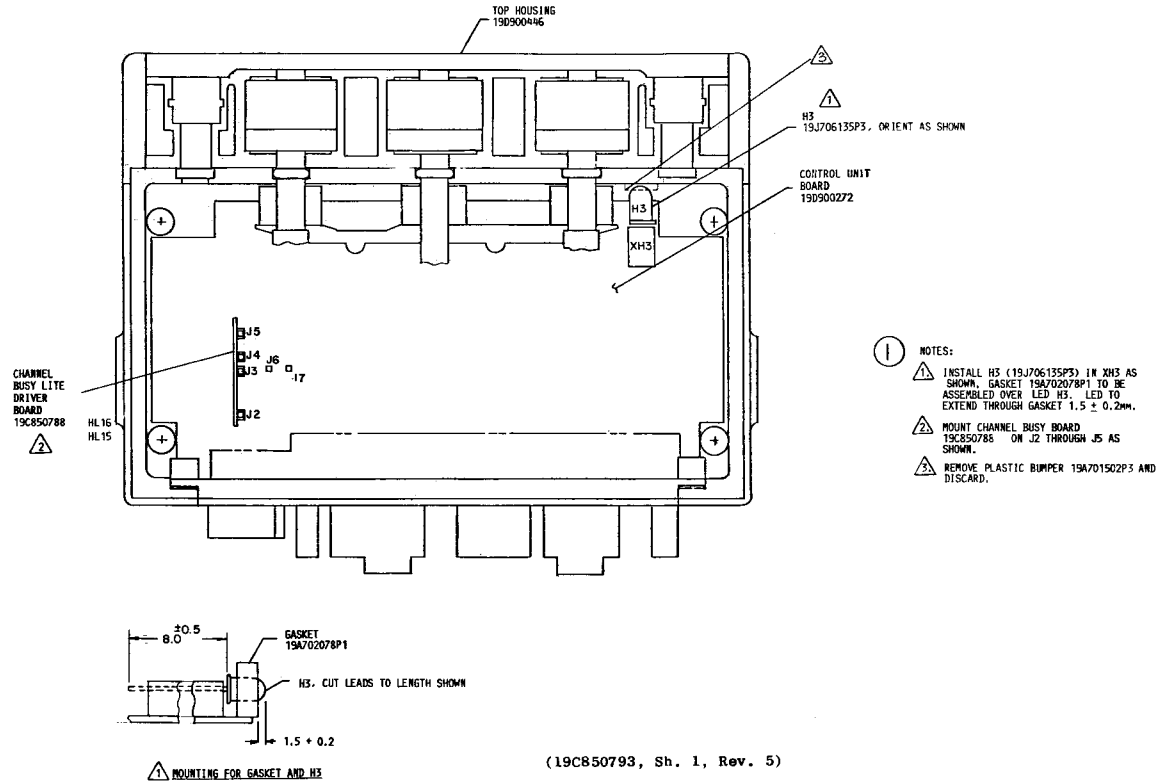


FIXED SQUELCH
NOTES:

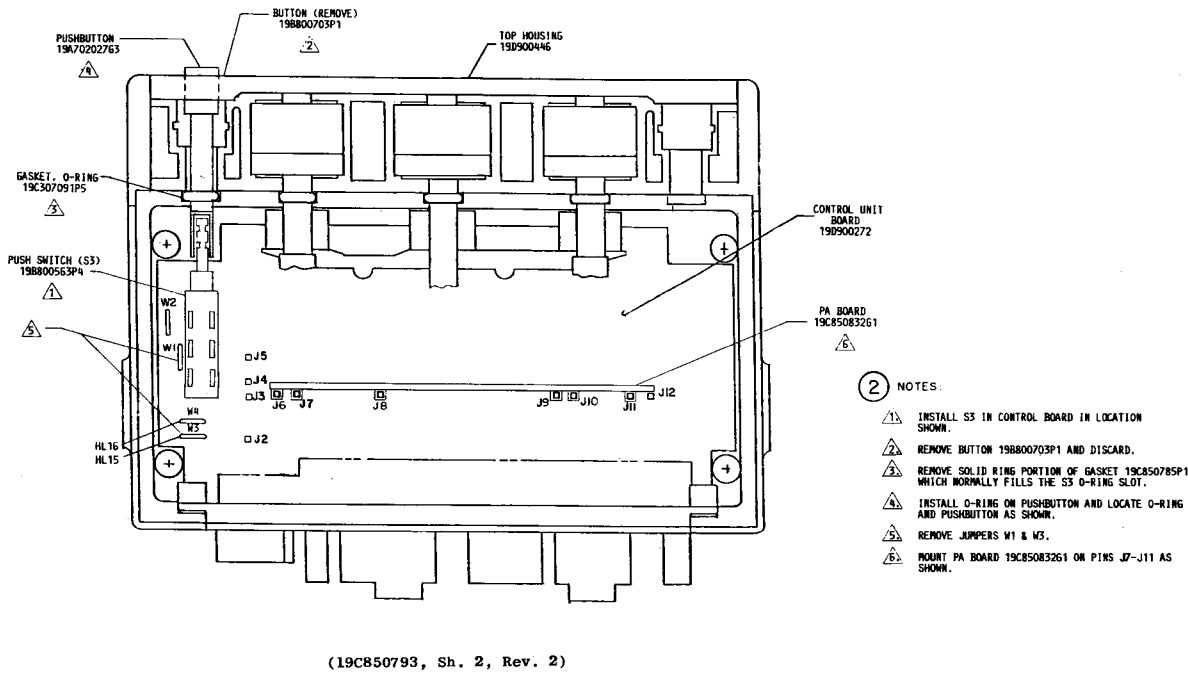
1. PART OF MOUNTING SUPPORT KIT 19A702065G1. DO NOT FULLY TIGHTEN. SUPPORT MUST BE ABLE TO ROTATE.
2. PART OF HARDWARE KIT 19A701796G1.
3. ASSEMBLE GASKET 19A701797P1 TO CONNECTOR 19C850601P1 (PART OF CONTROL UNIT BOARD) PRIOR TO ASSEMBLY OF CONTROL UNIT BOARD INTO TOP HOUSING.
4. ASSEMBLE GASKET 19C850785P1 TO BOTTOM HOUSING 19D900350P1 PRIOR TO ASSEMBLY OF TWO HOUSINGS. WHEN S4 IS CALLED FOR, REMOVE THE SOLID RING PORTION (4.8 DIA) WHICH NORMALLY FILLS THE S4 O-RING SLOT.
5. APPLY LUBRICANT 19A115093PS (SILICON GREASE) LIBERALLY TO ALL O-RING AND TO ALL SHAFT OPENINGS.
6. INSURE THAT THE THREE ROTARY KNOBS OPERATE FREELY WITHOUT INTERFERENCE.
7. ATTACH MOUNTING HARDWARE PACKAGE 19A129461G1 SECURELY TO MOUNTING SUPPORT.
8. CUT JUMPER W7 ON CONTROL UNIT PWB.

ADJUSTABLE SQUELCH
SAME AS FIXED SQUELCH (PART 1) EXCEPT APPLY OUTWARD PULL TO SHAFT OF R5/S5 AND ROTATE IN CLOCKWISE DIRECTION TO OVERRIDE STOP, THEREBY CONVERTING FROM FIXED SQUELCH (ON-OFF) TO ADJUSTABLE SQUELCH. CUT JUMPER W6 ON CONTROL UNIT PWB INSTEAD OF W7.

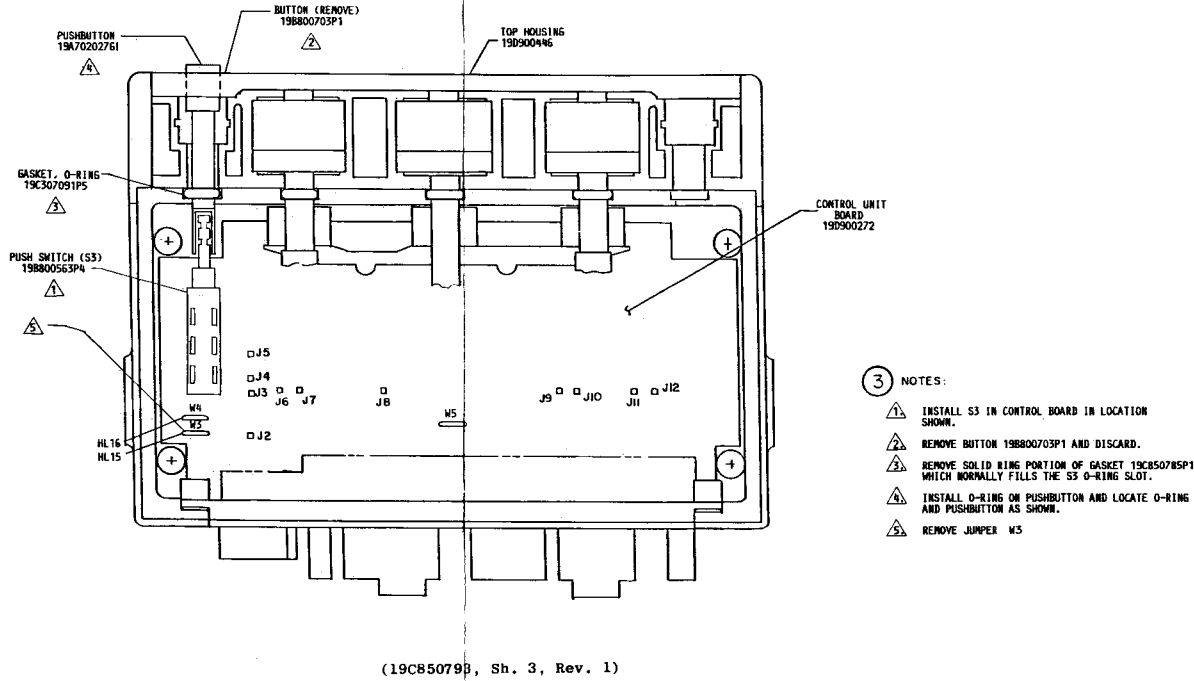
CHANNEL BUSY LIGHT



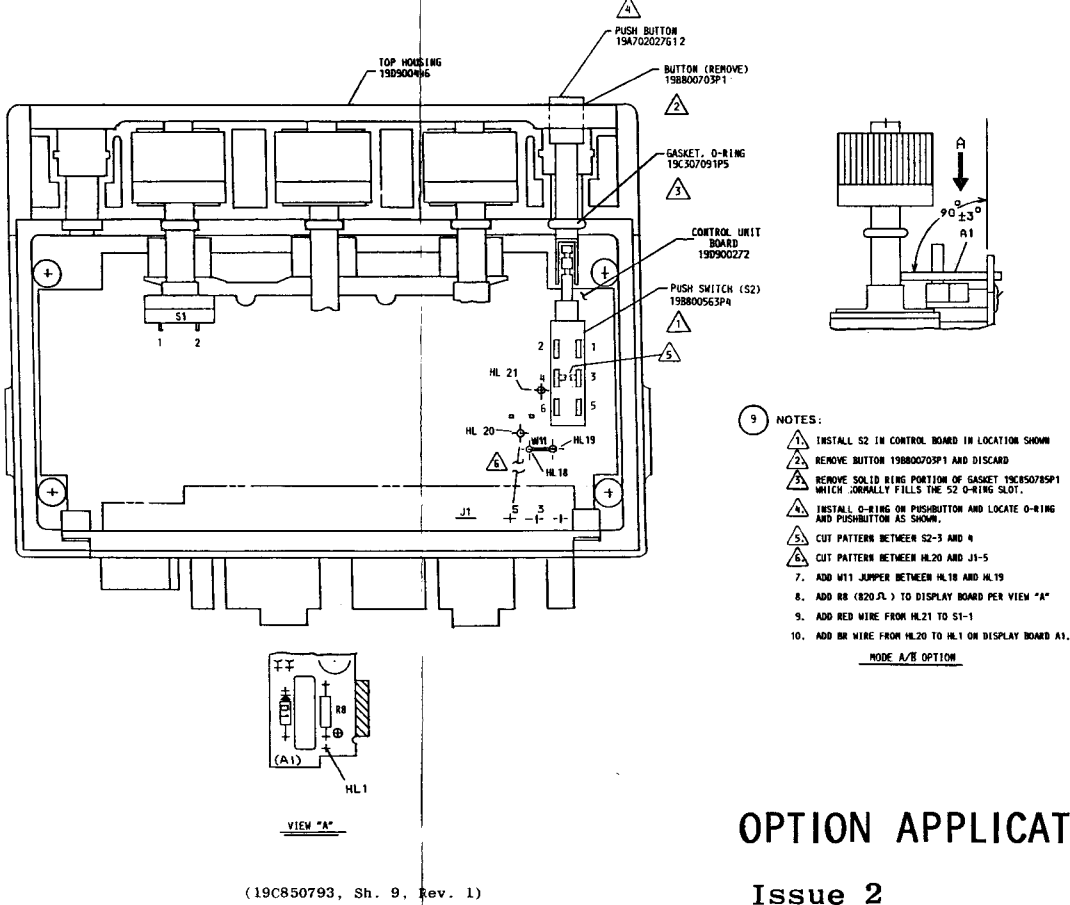
PUBLIC ADDRESS



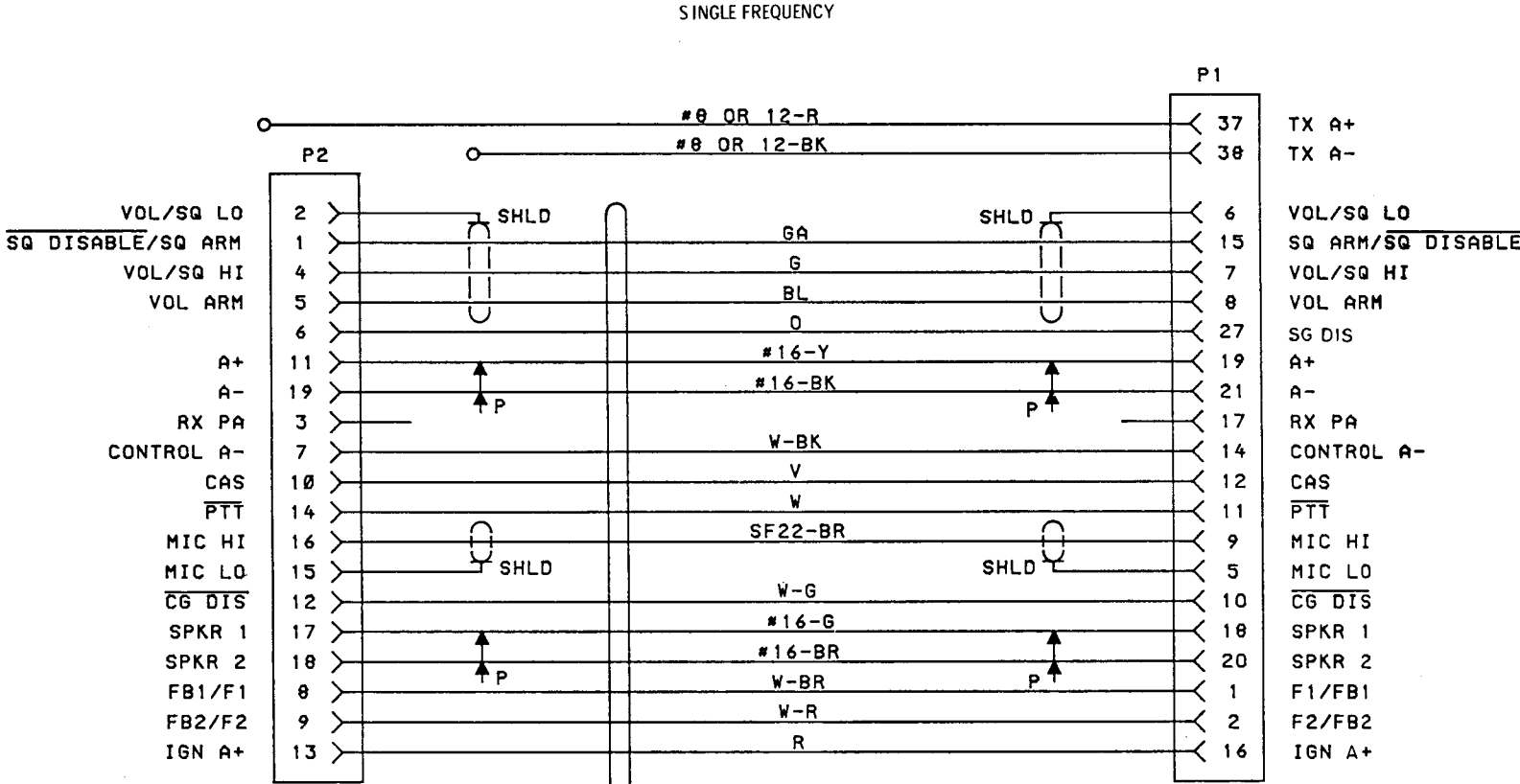
EXTERNAL SPEAKER



MODE A/B

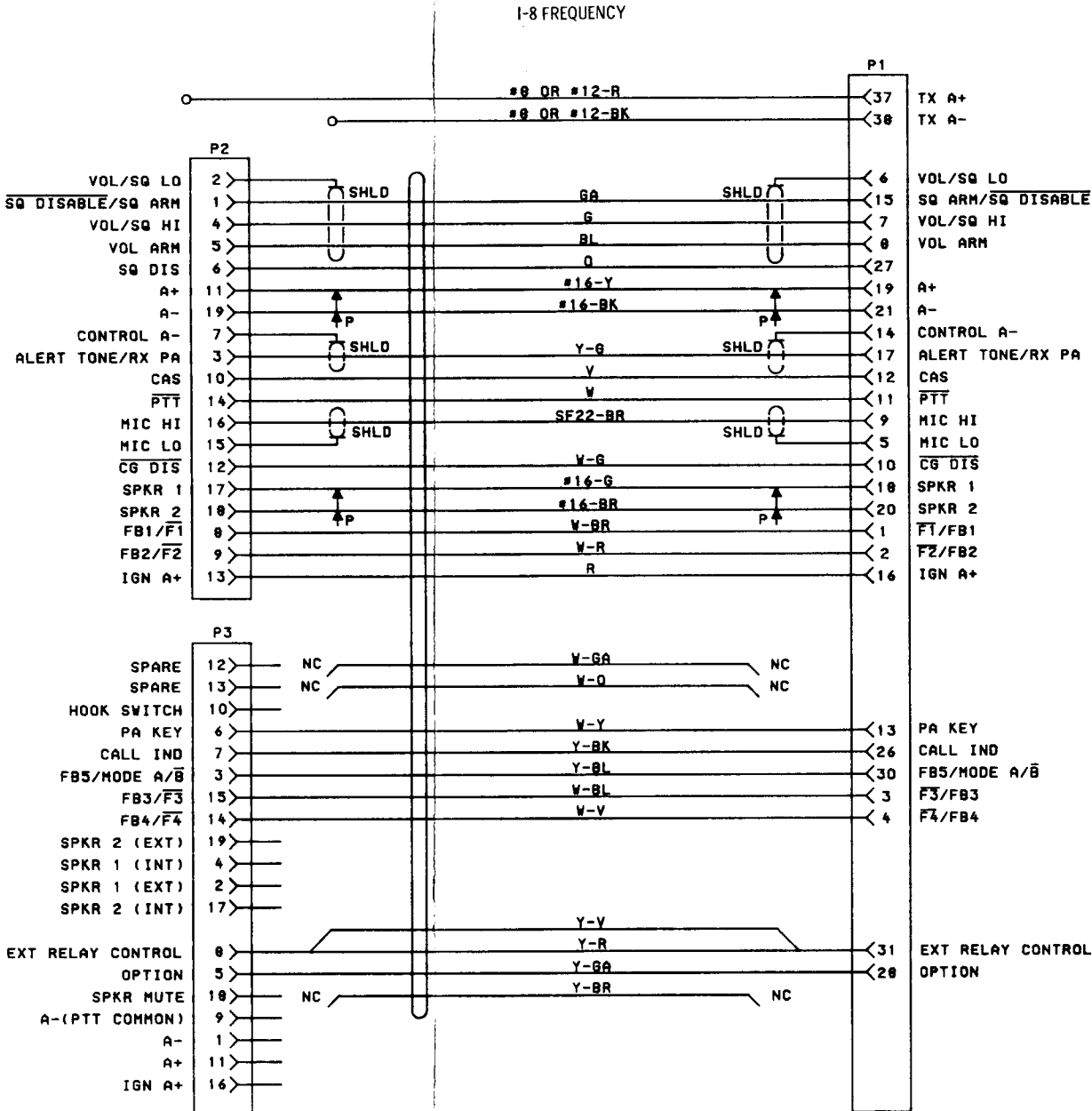


OPTION APPLICATION



ALL WIRES ARE #SF24 AWG UNLESS OTHERWISE SPECIFIED.

(19C331426, Rev. 3)



ALL WIRES ARE #SF24 AWG UNLESS OTHERWISE SPECIFIED.

(19D433080, Rev. 4)

INTERCONNECTION DIAGRAM

SINGLE FREQUENCY & 1-8 FREQUENCY
POWER/CONTROL CABLES 19D900436G1-G12

PARTS LIST

CONTROL UNIT BOARD
19D900272G3 SINGLE FREQUENCY
19A900272G4 1-8 FREQUENCIES
ISSUE 1

SYMBOL	GE PART NO.	DESCRIPTION
A1		DISPLAY BOARD 19B800752G2 19B800756G2
		----- DIODES -----
D1	19A700025P2	Silicon, zener: 400 mW max; sim to E 5-C2V7.
		----- INDICATORS -----
H1	19A134085P2	Display, optoelectronic: 7 segment.
		----- RESISTORS -----
R1 thru R8	19A700019P36	Deposited carbon: 820 ohms ±5%.
		----- CAPACITORS -----
C1	19A700234P12	Polyester: 0.068 uF ±10%, 50 VDCW.
		----- DIODES AND RECTIFIERS -----
D1	19J706100P2	Silicon, rectifier: sim to Type 1N4004.
D2 and D3	19A700028P1	Silicon, fast recovery: fwd current 75 mA, 75 PIV; sim to Type 1N4148.
		----- INDICATORS -----
H1	19C850743P1	Lamp, incandescent: 14.0 v; sim to GE Lamp Dept. No. 73.
H2	19J706135P2	Optoelectronic: red; sim to Hewlett Packard 5082-4655.
		----- JACKS AND RECEPTACLES -----
J1	19C850601P1	Connector.
J2 thru J12	19A701785P2	Contact, electrical; sim to Molex -08-50-0404.
		----- RESISTORS -----
R1	19A700019P54	Deposited carbon: 27K ohms ±5%, 1/4 w.
R2	19A700019P36	Deposited carbon: 820 ohms ±5%, 1/4 w.
R3	19B800745P1	Variable, carbon film: 10K ohms ±20%, 1/4 w; sim to CTS FR8653.
R4	19A700019P13	Deposited carbon: 10 ohms ±5%, 1/4 w.
R5	19B800745P2	Variable, carbon film: 10K ohms ±20%, 1/4 w; sim to Hal094.
		----- SWITCHES -----
S1		(Part of R3).
S5		(Part of R5).
S6	19B800921P1	Rotary: 2 sections; 2 poles, 8 positions, BCD output; sim to Oak Mfg. Co. 5-22131-413.
		----- CABLES -----
W1 thru W8	19A702028P1	Jumper.
		----- SOCKETS -----
XH1	19A701867P1	Holder, lamp; sim to Christiana Ind. C1C 6500.
XH2 thru XH4	19A701486P1	Connector, printed wiring: 3 pin; sim to Methode 1700-003-2103.

*COMPONENTS ADDED, DELETED OR CHANGED BY PRODUCTION CHANGES

PARTS LIST

3 x 5 INCH SPEAKER
19C850550G1 DASH MOUNT
19C850550G2 WINDOW MOUNT
ISSUE 3

SYMBOL	GE PART NO.	DESCRIPTION
		----- MISCELLANEOUS -----
		Knob. (Used with S6).
		Knob. (Used with R3 & R5).
		"O" Ring, rubber; sim to National Seal 6227-5. (Used with R3, R5, & S6).
		Gasket. (Used with H2).
		Light pipe.
		Pad. (Used with S4 & S5).
		----- LOUDSPEAKERS -----
LS1	19A702080P3	Permanent magnet: 76 x 1 mm, 8 ohms ±10% imp at 400 Hz, 18 w.
		----- CABLES -----
W1	19A129414G1	2 conductor cable: approx 5 feet long, includes (2) 19A116781P5 contacts.
W1	19B226189G1	Window mount: approx. 17 inches retracted, 84 inches extended. (Includes 2 19A116781P5 contacts).
		BREAKAWAY MOUNTING KIT 19A129461G1
		Retaining bracket. (With locking jaws).
		Safety Release Disc. (Mates with mounting surface).
		Machine screw, hexhead, slotted: No. 10-32 x 5/8. (Quantity 1 - Used with safety release disc with retaining bracket).
		Tap screw, thd. forming: No. 10-16 x 3/4. (Quantity 3 - Used without safety release disc & retaining bracket).
		Tap screw, thd. forming: No. 10-16 x 1-1/2. (Quantity 3 - Used without safety release disc & retaining bracket - for extra thick carpet).
		Flatwasher: No. 10. (Used with 10-16 thread forming screws).
		DASH MOUNT KIT FOR WINDOW MOUNT SPEAKER OPTION 19A130023G2
		Backing plate.
		Clip bracket.
		Tap screw, phillips head: No. 8-18 x 1/2. (Secures backing plate to mounting surface).
		----- MISCELLANEOUS -----
		Housing. (DASH MOUNT).
		Housing. (WINDOW MOUNT).
		Grille.
		Strain relief. (Used with W1 window mount cable at housing).
		Nameplate. (GENERAL ELECTRIC).
		Mounting bracket. (Secures speaker assembly to mounting surface).
		Machine screw: No. 10-32 x 5/16. (Secures speaker housing to mounting support).
		Lockwasher: No. 10. (Secures speaker housing to mounting support).
		Lockwasher, external tooth: No. 10. (Secures speaker housing to mounting support).
		Screw, thread forming, assembled washer: Phillips POZIDRIVE®, R1-LO thread, No. 7-19 x 3/4. (Secures grille to housing).

*COMPONENTS ADDED, DELETED OR CHANGED BY PRODUCTION CHANGES

SYMBOL	GE PART NO.	DESCRIPTION
	1R11P5	Quick blowing: 20 amps, 250 v; sim to Bussmann NON20. (LOW POWER).
		- - - - - MISCELLANEOUS - - - - -
	19D900350P1	Bottom housing.
	19C850785P1	Lower housing gasket.
	19A701797P1	Gasket. (Located between J1 & housing).
	19B219826G1	Speaker cable: 2 conductor, approx. 20 ft.
	19B800563P4	Switch, push: DPDT, contacts rated 2 amps @ 16.6 VDC; sim to IEEE/SCHADOW P2VEE.
	19A702027G1	Pushbutton. (Used with S3).
	19C307091P5	"O" Ring, rubber; sim to National Seal 6227-5. (Used with S3).

PARTS LIST
POWER/CONTROL CABLES
19D900438G1 - G12
ISSUE 3

SYMBOL	GE PART NO.	DESCRIPTION
		G1 18 CONDUCTOR 3 METER SHORT GRD G2 18 CONDUCTOR 3 METER LONG GRD G3 18 CONDUCTOR 6 METER SHORT GRD G4 18 CONDUCTOR 6 METER LONG GRD G5 18 CONDUCTOR 9 METER SHORT GRD G6 18 CONDUCTOR 9 METER LONG GRD
P1		Connector. Includes: Shell. 19D900037P1 19A701376P1 Contact, electrical rated @ 4 amps; sim to AMP 350657-1. (P1-1, 2, 5 thru 13, 15, 16, 27). 19A701376P2 Contact, electrical rated @ 4 amps; sim to AMP 350656-1. (P1-18 thru 21). 19A701376P3 Contact, electrical rated @ 35 amps; sim to AMP 350655-1. (P1-37 & 38). 19D900015P1 Housing. 19C850508P1 Cover. 19B800882P1 Thumbscrew: thd. size M4 x 0.7. 19A701312P6 Flat washer: 1.7-1.85 ID (Located on thumbscrew). 19A701488P4 Retaining ring. (Located on thumbscrew). 19A701507P608 Screw, thd. forming: No. 3.5-1.27 x 12.7. (Secures shell to housing). 19A701507P606 Screw, thread forming: No. 3.5-1.27 x 9.60. (Secures cover to housing). 19B800513P1 Gasket.
P2		Connector. Includes: Shell. 19B226516G5 19A116781P5 Contact, electrical: wire range No. 18-24 AWG; sim to Molex 08-50-0106. (P2-11, 17 thru 19). 19A116781P6 Contact, electrical: wire range No. 22-26 AWG; sim to Molex 08-50-0108. (P2-1, 2, 5 thru 12, 14 thru 16, 27). G7 30 CONDUCTOR 3 METER SHORT GRD G8 30 CONDUCTOR 3 METER LONG GRD G9 30 CONDUCTOR 6 METER SHORT GRD G10 30 CONDUCTOR 6 METER LONG GRD G11 30 CONDUCTOR 9 METER SHORT GRD G12 30 CONDUCTOR 9 METER LONG GRD
P1		Connector. Includes: Shell. 19D900037P1 19A701376P1 Contact, electrical rated @ 4 amps; sim to AMP 350657-1. (P1-1 thru 17, 26 thru 28, 30, 31). 19A701376P2 Contact, electrical rated @ 4 amps; sim to AMP 350656-1. (P1-18 thru 21). 19A701376P3 Contact, electrical rated @ 35 amps; sim to AMP 350655-1. (P1-37 & 38). 19D900015P1 Housing. 19C850508P1 Cover. 19B800882P1 Thumbscrew: thd. size M4 x 0.7. 19A701312P6 Flat washer: 1.7-1.85. (Located on thumbscrew). 19A701488P4 Retaining ring. (Located on thumbscrew). 19A701507P608 Screw, thd. forming: No. 3.5-1.27 x 12.7. (Secures shell to housing). 19A701507P606 Screw, thread forming: No. 3.5-1.27 x 9.60. (Secures cover to housing). 19B800513P1 Gasket.

SYMBOL	GE PART NO.	DESCRIPTION
P2		Connector. Includes: Shell. 19B226516G5 19A116781P5 Contact, electrical: wire range No. 18-24 AWG; sim to Molex 08-50-0106. (P2-11, 17 thru 19). 19A116781P6 Contact, electrical: wire range No. 22-26 AWG; sim to Molex 08-50-0108. (P2-1 thru 10, P2-12 thru 16).
P3		Connector. Includes: Shell. 19B226516G7 19A116781P6 Contact, electrical: wire range No. 22-26 AWG; sim to Molex 08-50-0108. (P3-3, 5 thru 8, 14, 15). - - - - - MISCELLANEOUS - - - - - 7139880P13 Cable: 18 conductor. (Specify length - Used in G1 - G6). 7139880P14 Cable: 30 conductor. (Specify length - Used in G7 - G12). 19A701460P2 Cable, battery red; sim to GE S1-57528. Used in G3 - G6, G9 - G12). 19A701460P10 Cable, battery black. (Used in G3-G6, G9-G12). 19A701503P2 Cable: battery, red; 3 Meter. (Used in G1, G2, G7, G8). 19A701503P10 Cable: battery, black. (Used in G1, G2, G7, G8). 19B800629P1 Solderless terminal. (Located on black battery cable in G3, G5, G6, G11). 19B800629P2 Solderless terminal. (Located on black battery cable in G1 & G7). 19B800629P3 Solderless terminal. (Located on battery cables in G1, G2, G7 & G8). 19B800629P4 Solderless terminal. (Located on battery cables in G1, G2, G7, & G8). 19A701077P1 Clip. (Secures cable to P1). 19A700031P425 Machine screw: No. M3.5-x 25. (Secures clip to cable at P1). 19A700034P4 Nut, hex: No. M3 x 0.5MM. (Secures clip to cable at P1). 19A700032P5 Lockwasher, internal tooth: No. 3MM. (Secures clip to cable at P1). 7142878G1 Clip loop. (Secures cable at P2).

*COMPONENTS ADDED, DELETED OR CHANGED BY PRODUCTION CHANGES.

PARTS LIST

LBI31247
S600 ASSOCIATED ASSEMBLIES

SYMBOL	GE PART NO.	DESCRIPTION
		TOP HOUSING 19D900446G3 SINGLE FREQUENCY 19D900446G4 MULTI FREQUENCY
	19A703163P1	Nameplate. (GENERAL ELECTRIC).
	19B800767P2	Nameplate. (DISPLAY - MULTI FREQ).
	19B800767P1	Nameplate. (DISPLAY - SINGLE FREQ).
	19D900334P1	Insert. (Located over display nameplate).
	19B800703P1	Button. (Located on each side of GENERAL ELECTRIC nameplate).
	19A701502P3	Bumper, plastic. (Plugs CL & BY displays).
	19A800704P1	Plug button. (Used in single frequency when S6 is not used).
	19A701799P1	Plate. (Used in single frequency when S6 is not used).
	19J706212P202	Screw, thd. forming: No. 4 x 6.35MM. (Secures 19A701799P1 plate).
		MOUNTING SUPPORT KIT 19A702065G1
	19D900344P1	Control unit mounting support.
	19A701631P516	Machine screw: No. 10-32 x 5/16. (Secures control unit to mounting support).
	19A700033P10	Lockwasher, external tooth: No. 10. (Secures control unit to mounting support).
	19A701312P7	Lockwasher: No. 10. (Secures control unit to mounting support).
		BREAKAWAY MOUNTING KIT 19A129461G1
	19C320022P1	Retaining bracket. (With locking jaws).
	19B219578G1	Safety Release Disc. (Mates with mounting surface).
	N187P16010C6	Machine screw: No. 10-32 x 5/8. (Quantity 1 - Used with safety release disc with retaining bracket).
	N130P16012C6	Tap screw, thd. forming: No. 10-16 x 3/4. (Quantity 3 - Used without safety release disc & retaining bracket).
	N130P16024C6	Tap screw, thd. forming: No. 10-16 x 1-1/2. (Quantity 3 - Used without safety release disc & retaining bracket - for extra thick carpet).
	N402AP9C6	Flatwasher: No. 10. (Used with 10-16 thread forming screws).
		HOUSING HARDWARE KIT 19A701796G1
	19A701847P308	Screw, thd. forming: No. 6-3.2 x 25.40MM. (Secures top housing to bottom housing).
	19A700031P410	Machine screw: No. M3-0.5 x 10. (Secures J1 to rear of housing).
		12 VOLT FUSE MOUNTING ASSEMBLY 19B216021G2 MEDIUM POWER 19B216021G3 HIGH POWER 19B216021G6 LOW POWER (Fuses must be ordered separately)
	1R11P7	Quick blowing: 30 amps, 250 v; sim to Bussmann NON30. (HIGH POWER).
	1R11P6	Quick blowing: 25 amps, 250 v; sim to Bussmann NON25. (MEDIUM POWER).

*COMPONENTS ADDED, DELETED OR CHANGED BY PRODUCTION CHANGES

ADDENDUM NO. 1 TO LBI-31231C
PCC4

This addendum describes Revision Letter changes that are not yet included in the publication.

REV. C- MICROPHONE 19D900141G3

Capacitor C5 was changed to alter the low frequency response of the microphone to improve Digital Channel Guard operation. The part number is:

C5- Tantalum; 4.7 uF $\pm 20\%$, 35 VDCW